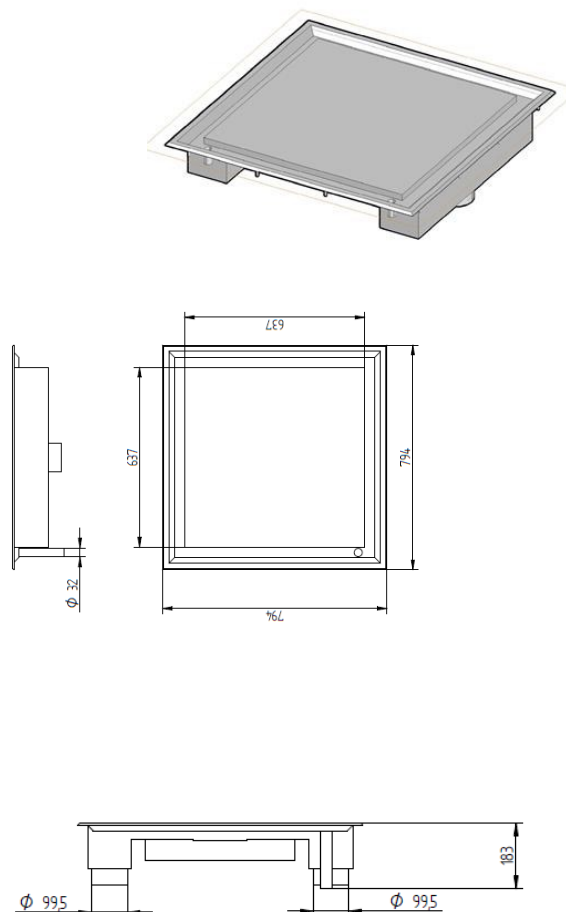


### TECHNICAL FEATURES

<b>External structure</b>	AISI 304 stainless steel
<b>Dimensions</b>	800 x 800
<b>Power</b>	16000W = 4 x 4000W
<b>Cooking surface</b>	Multilayer composite aluminium + stainless steel
<b>Control panel</b>	Knobs
<b>Amp</b>	24A
<b>Functions</b>	(x2) 360° knobs with 4 digits display
<b>Power supply</b>	360-440V AC 50 - 60 Hz Compatible with TERRA WATT & SICO-TRONIC energy optimizer.
<b>Weight</b>	90kg / 198,4 lbs
<b>Standards</b>	Complies with European standards for safety of electrical appliances.
<b>Options &amp; Details</b>	Including a power cord and washable filters (wash regularly). Plug, spatula and ventilation kit available upon request.



millimeters



Cut out: 745 x 745

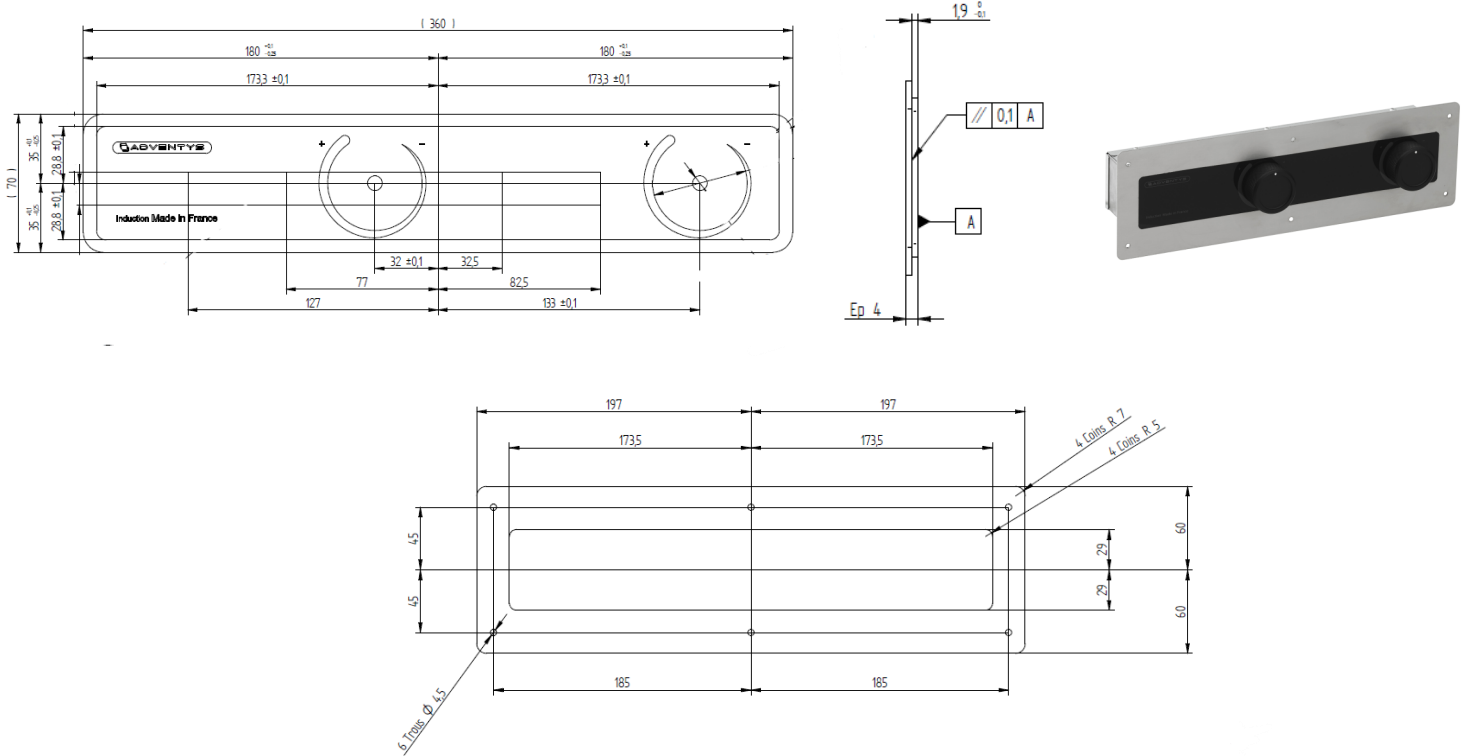
**ADVENTYS**  
Route de Pagny - 21250 Seurre - France  
www.adventys.com  
sales@adventys.com  
T: +33 3 80 20 46 15

**Important note**

Adventys reserves the right to modify specifications without notice.



Controls dimensions



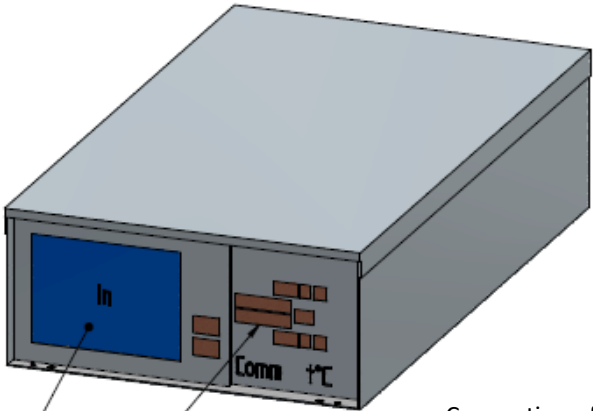
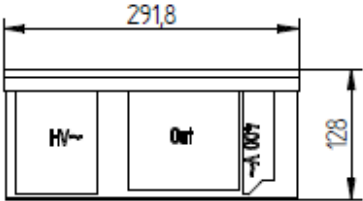
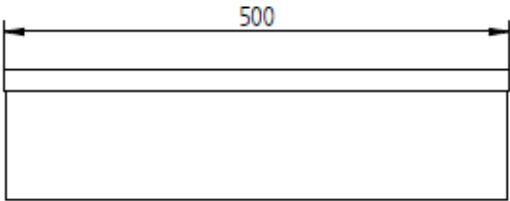
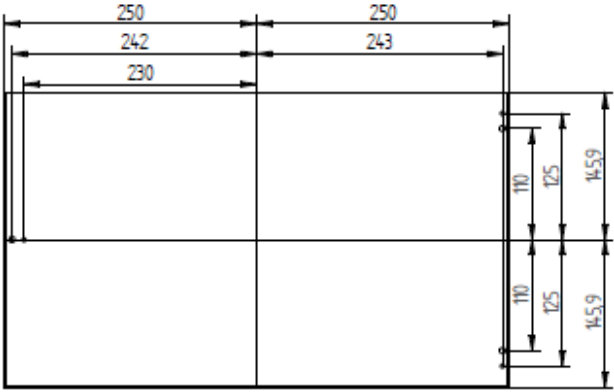
**Dimensions de découpe 394x120mm**

ADVENTYS  
Route de Pagny - 21250 Seurre - France  
www.adventys.com  
sales@adventys.com  
T: +33 3 80 20 46 15

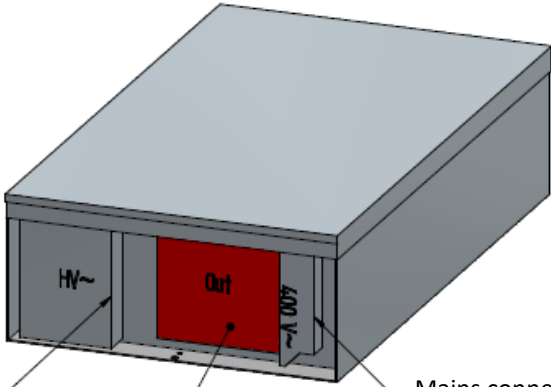
**Important note**

Adventys reserves the right to modify specifications without notice.

Generators dimensions (x2 generators)



Air inlet  
 Connection of controls, sensors, fans  
 Connection of inductors



Air outlet  
 Mains connection

**ADVENTYS**  
 Route de Pagny - 21250 Seurre - France  
[www.adventys.com](http://www.adventys.com)  
[sales@adventys.com](mailto:sales@adventys.com)  
 T: +33 3 80 20 46 15

**Important note**

Adventys reserves the right to modify specifications without notice.

